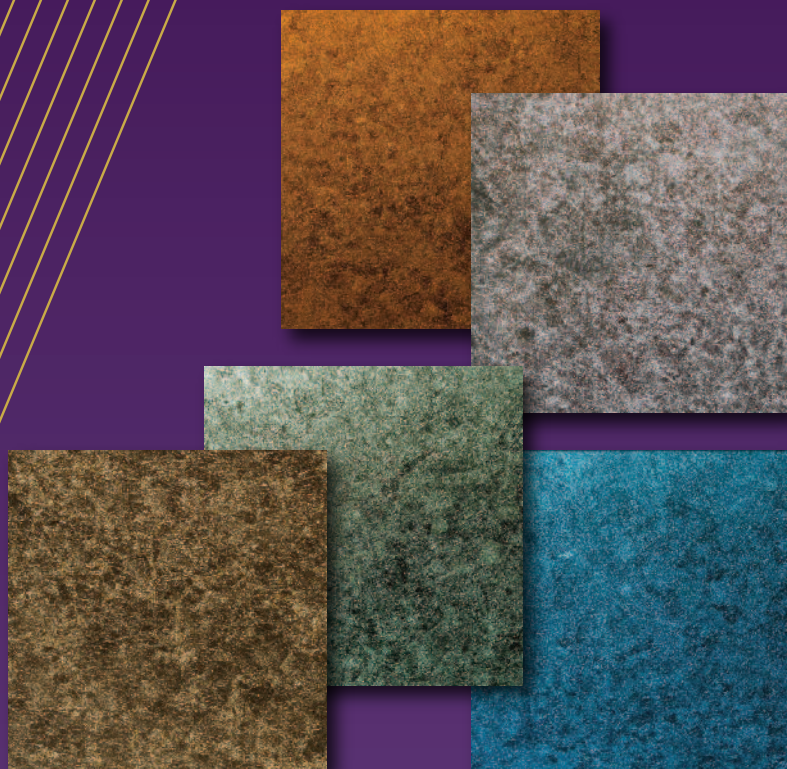




BY APPOINTMENT TO HM KING CHARLES III
WINDSOR GLASS CO LTD
GLASS MERCHANTS
ESTABLISHED 1951

WINDSOR
GLASS



VERRE ÉGLOMISÉ
SAINT ÉTIENNE

HAND APPLIED METAL LEAF

T 01753 862224

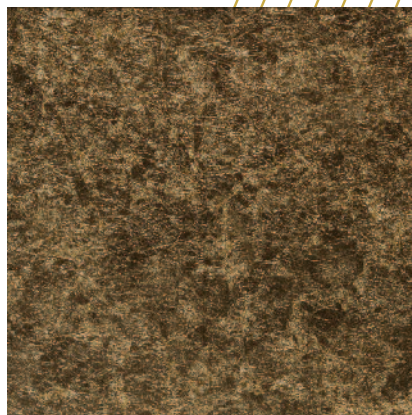
W WINDSORGLASS.COM

A WINDSOR GLASS CO LTD, UNIT 8, VANSITTART ESTATE, WINDSOR, BERKSHIRE SL4 1SE, UNITED KINGDOM





VERRE ÉGLOMISÉ
SAINT ÉTIENNE
GOLD RESIN ÉGLOMISÉ



VERRE ÉGLOMISÉ
SAINT ÉTIENNE
GOLD LEAF



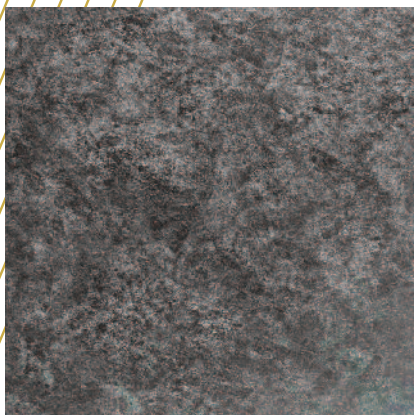
VERRE ÉGLOMISÉ
SAINT ÉTIENNE
COPPER ON BRONZE



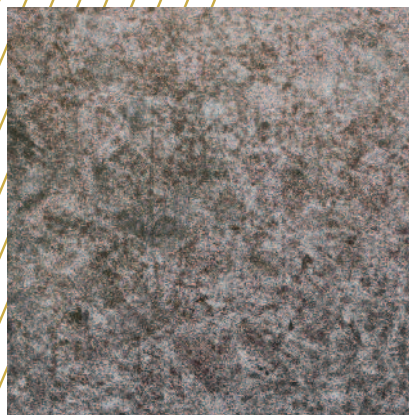
VERRE ÉGLOMISÉ
SAINT ÉTIENNE
COPPER



VERRE ÉGLOMISÉ
SAINT ÉTIENNE
GOLD ON BRONZE



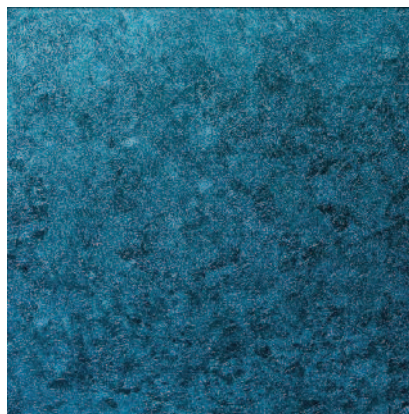
VERRE ÉGLOMISÉ
SAINT ÉTIENNE
SILVER ON GREY



VERRE ÉGLOMISÉ
SAINT ÉTIENNE
SILVER



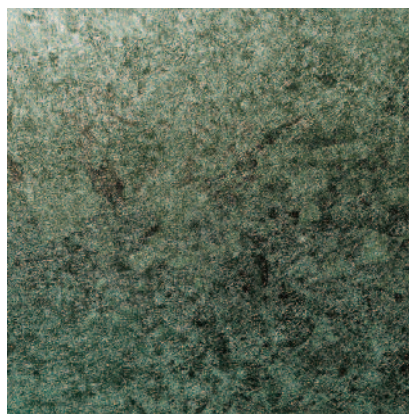
VERRE ÉGLOMISÉ
SAINT ÉTIENNE
SILVER ON ACID



VERRE ÉGLOMISÉ
SAINT ÉTIENNE
SILVER ON BLUE



VERRE ÉGLOMISÉ
SAINT ÉTIENNE
SILVER ON BRONZE



VERRE ÉGLOMISÉ
SAINT ÉTIENNE
SILVER ON GREEN



Verre églomisé is a French term referring to the process of applying both a design and gilding onto the rear face of glass to produce a mirror finish. The name is derived from the 18th-century French decorator and art-dealer Jean-Baptiste Glomy, who was responsible for its revival.

T 01753 862224

W WINDSORGLASS.COM

A WINDSOR GLASS CO LTD,
UNIT 8 VANSITTART ESTATE,
WINDSOR, BERKSHIRE SL4 1SE
UNITED KINGDOM



BY APPOINTMENT TO HER MAJESTY CHARLES III
WINDSOR GLASS CO LTD
GLASS MERCHANTS
ESTABLISHED 1745

WINDSOR
GLASS